

escaro

— I m p e x —

Clay  
Creations  
Endless  
Imagination



[www.escaroimpex.com](http://www.escaroimpex.com)

Escaro impex Pvt. Ltd. is a Ceramic Raw Materials providing company, having its presence since 2019 , located in Morbi, Gujarat. The only purpose of establishing this company is to supply excellent raw material to a progressively flourishing ceramic industry in the utmost customer-oriented manner. Along with the growth of the ceramic industry, trade and reputation of Escaro Impex Pvt Ltd. have enlarged. To fulfill our clients growing requirements, we came up with an expansion plan which posses' wide range of quality raw material and professionalism in business. Hence, in the present times, we offer a well and polished rounded choice of materials & tools for Ceramic Tiles , Sanitary ware , Paper industries and paint manufacturer. Irrespective of you being ceramicist, sculptor, mold creator or proficient potter, we have a resolution for you all.

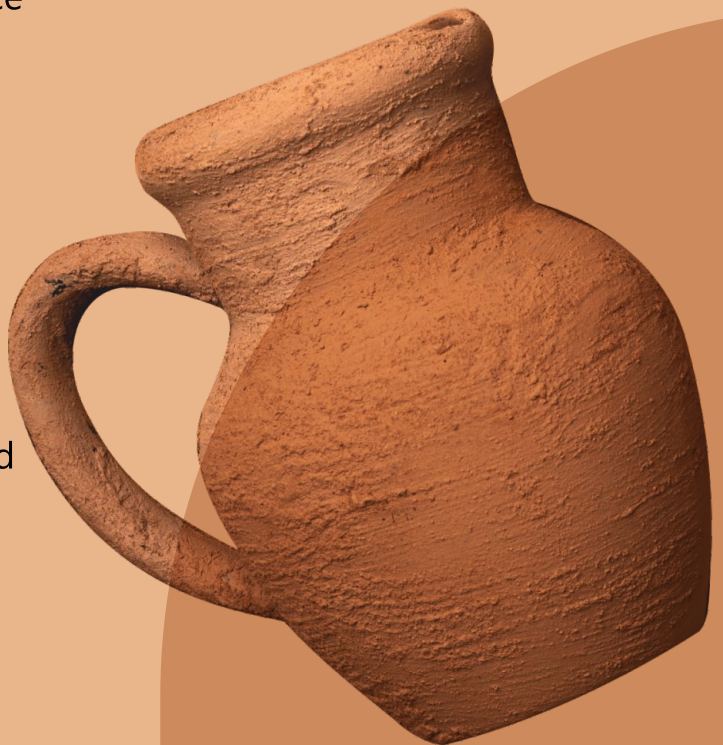
Explore *Our*  
Background



# Uncover *Our* Purpose

Nowadays, in this cut-throat competition, the authenticity of material becomes a key aspect of the company's growth, which is delivered by us. Being a responsible supplier, it is strongly believed by Escaro impex Pvt. Ltd. that customer's objects can always be assembled satisfactorily by understanding their every kind of phase of the built-up method. With growing globalization & liberalization across the globe, Escaro impex Pvt. Ltd. successfully adapted professionalism which helped to achieve growth and success. With these passing years, we have acquired excellence of not to leave any stone unturned to satisfy our esteemed clients as we are more than suppliers, we actually provide every bit of quality in our raw products.

Escaro impex Pvt. Ltd. with its founding members has put every effort to support the ceramic industry, Paper industries and paint industries with a new approach by way of vast experience and technical knowledge.



# Alumina

Alumina, or aluminum oxide, is a high-performance material valued in the ceramic, paint, and rubber industries for its exceptional hardness, thermal stability, and resistance to wear. In ceramics, it enhances durability, mechanical strength, and resistance to high temperatures. For paints, alumina provides improved scratch resistance and gloss retention, while in rubber applications, it boosts abrasion resistance and mechanical reinforcement, ensuring superior durability and performance.



# China Clay (KAOLIN CLAY)

It is basically used in ceramic body and glaze compositions for making porcelain, glazed earthenware and stoneware. And also used in Paper industries and Paint industries . It increases the whiteness and improves the ceramic properties of the ultimate product. And it increases the whiteness and brightness improves in paper industries .

## **CHINA CLAY TYPE**

- POWDER FORM • LUMS GRADE • NOODLES GRADE



# STTP

(SODIUM TRIPOLYPHOSPHATE)

Sodium Tripolyphosphate (STPP) is characteristically used as deflocculants in the mining and processing of clay minerals and then again as dispersants in preparing slurries for whiteware, glaze, and enamel manufacture.



# C.M.C

It has good solubility in both hot and cold water and the solution is used as thickener and binder in glazes and bodies. It is useful in once-fired ware to build body strength and permits ware handling after glazing.



# Wallestonite

Wollastonite is a naturally occurring mineral with exceptional strength and thermal stability, making it valuable in the ceramic, paint, and rubber industries. In ceramics, it enhances strength, reduces shrinkage, and improves thermal shock resistance. For paints, wollastonite acts as a functional extender, offering improved durability, corrosion resistance, and better adhesion. In rubber, it increases tensile strength and dimensional stability, enhancing overall product performance.



# Zirconium

Zirconium is a versatile element widely used in the ceramic, paint, and rubber industries for its high thermal stability, corrosion resistance, and strength-enhancing properties. In ceramics, zirconium compounds, such as zirconia, enhance hardness, thermal shock resistance, and surface smoothness, making them ideal for tiles and sanitary ware. For paints, zirconium provides improved durability, gloss retention, and resistance to UV and chemical exposure. In rubber applications, it boosts wear resistance and contributes to the overall durability of the product.



# Zirconium Replacements

Zirconium replacements in the ceramic, paint, and rubber industries aim to offer cost-effective alternatives without compromising on performance. These substitutes can include minerals and compounds that enhance thermal stability, durability, and resistance properties similar to zirconium. By optimizing formulations, zirconium alternatives provide high strength, weather resistance, and improved processing capabilities for ceramics, coatings, and rubber products.



# Soda feldspar

sodium feldspar is an essential ingredient for enhancing aesthetics. It promotes the fusion of other glaze components, producing a smooth and glossy surface on ceramic products like tiles , tableware, decorative items, and sanitaryware . This glossy finish not only adds beauty but also provides a protective layer.



# Quartz

Quartz is a mineral composed of silicon and oxygen, with a chemical composition of  $\text{SiO}_2$ . It is the most abundant mineral in Earth's crust and is resistant to both chemical and physical weathering. When rocks weather away, the residual material usually contains quartz. This is why the sand at most of the world's beaches is quartz.

Quartz sand is used in the glassmaking industry to manufacture ceramics Tiles , Ceramic glaze compound , glass and moulds for metal casting. It is used to make container glass, flat plate glass, speciality glass, and fibreglass.

## QUARTZ TYPE

- LUMES GRADE • POWDER GRADE



# Zinc oxide

Zinc oxide powder is used in ceramics, glass, animal feed, catalysts, electroplating, lightning arresters, pharmaceutical, tire & tube and paints & pigments.



# Titanium Dioxide

Titanium dioxide ( $\text{TiO}_2$ ) is a key pigment known for its brilliant whiteness, high opacity, and UV resistance, making it highly valuable in the ceramic, paint, and rubber industries. In ceramics, it enhances whiteness and adds opacity to glazes. For paints, it provides excellent coverage, color retention, and durability, while in rubber applications, it improves resistance to UV degradation, enhancing product longevity and color stability.



# Sodium Lingo Sulphonate

Sodium lignosulfonate is a versatile dispersing agent and binder commonly used in the ceramic, paint, and rubber industries. In ceramics, it improves the plasticity and workability of clay bodies while acting as a deflocculant. For paints, it enhances pigment dispersion, stability, and flow characteristics, and in rubber applications, it aids in processing by improving filler dispersion and enhancing compound uniformity.





WE EXPORT IN 10+ COUNTRY

**escaro**  
— I m p e x —



621/622, 6th Floor, Luxuria Business Park,  
Nr Mahendranagar Chowkdi - Morbi - 363642

**CONTACT**

Domestic: +91 78743 61137 | International: +91 99741 85283 | +91 83201 42851  
[escaroimpex@gmail.com](mailto:escaroimpex@gmail.com) | [www.escaroimpex.com](http://www.escaroimpex.com)